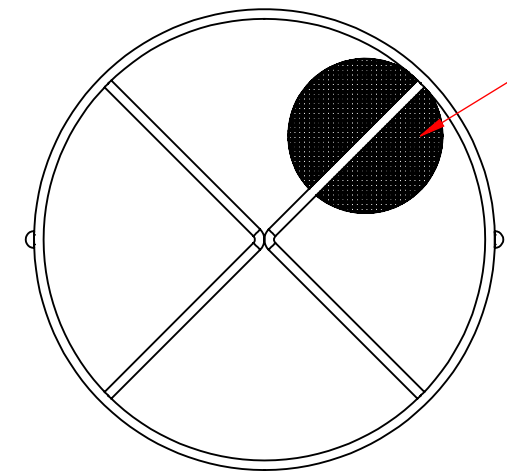
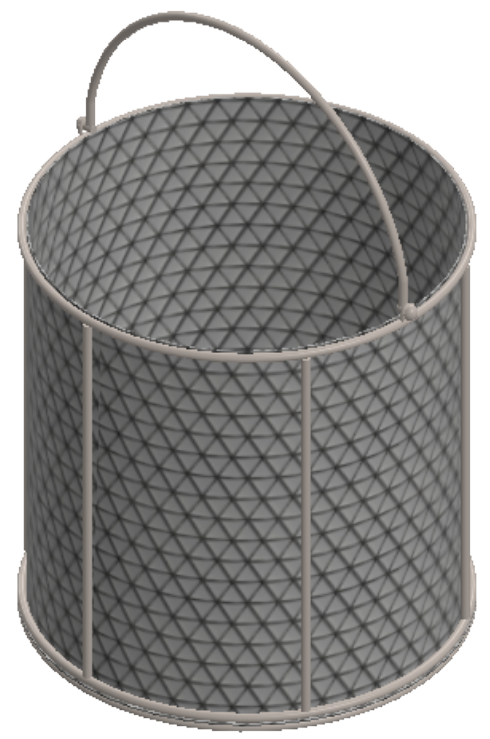
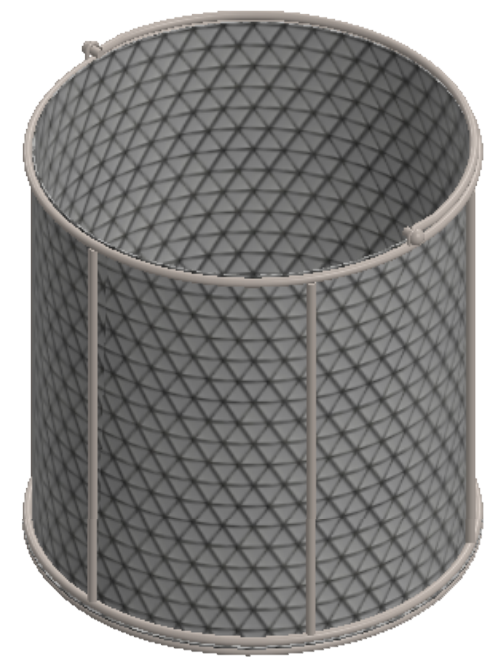


$\phi \frac{1}{4}$ "
Rod Frame



Lined Bottom and Sides with
8 Mesh x .047" Woven Wire
(.078" Openings, 39% Open Area)



UNLESS OTHERWISE SPECIFIED:
DIMENSIONS ARE IN INCHES
TOLERANCES:
FRACTIONAL $\pm 1/16$ "
ANGULAR: ± 5 DEG.
TWO PLACE DECIMAL ± 0.03
THREE PLACE DECIMAL ± 0.015

EST WGT
7.6 lbs.
MATERIAL
304 Stainless Steel
FINISH
Natural

DO NOT SCALE DRAWING

Round Wire Mesh Basket: 12Dia. x 12H,
304 SS, 1/4 Rod Frame, Swinging Round
Loop Handle, Mesh: 8 x .047

SIZE **B** DWG. NO.
TMT-120RND120-C08S

PROPRIETARY AND CONFIDENTIAL
THE INFORMATION CONTAINED IN THIS
DRAWING IS THE SOLE PROPERTY OF
THREE M TOOL. ANY REPRODUCTION IN
PART OR AS A WHOLE WITHOUT THE
WRITTEN PERMISSION OF THREE M TOOL
IS PROHIBITED.

SCALE: 1:5

SHEET 1 OF 1